

JULIUS-K9®

JK9 PET LASER 580 DUO

USER GUIDE



julius-k9.com
JK9 IP Management Zrt.

Table of Contents

About lasers in general	2
How soft laser therapy works	2
What are the physiological effects of soft laser light?	3
What kind of animals can we treat with the JK9 Pet Laser?	4
Which laser wavelength can be used for which disease?	4
How does soft laser work in veterinary medicine?	6
We tamed Einstein's laser	6
JK9 Pet Laser 580 Duo Overview	7
Treatment procedure with the JK9 Pet Laser 580 Duo device	9
Duration of treatments in each area	10
Frequency of treatments	10
Determination of treatment sites	12
Contraindications	13
Laser safety regulations	13
Installation and use of devices	14
Maintenance and repair	15
Warehousing, storage	16
Warranty	16
Explanation of labels on the device	21
Manufacturer's Declaration of Compliance	22

About lasers in general

In medicine, lasers can be divided into two groups based on their biological effects:

- High power = “hard lasers” - surgical lasers
- Low power = “soft lasers” - therapeutic lasers

The JK9 Pet Laser devices belong to the group of therapeutic “soft lasers” and, thanks to their optics made with a patented process, they exclude the extremely dangerous and damaging effects of soft lasers on the eyes.

Soft lasers use the photochemical reaction effect of laser light to initiate beneficial biological processes.

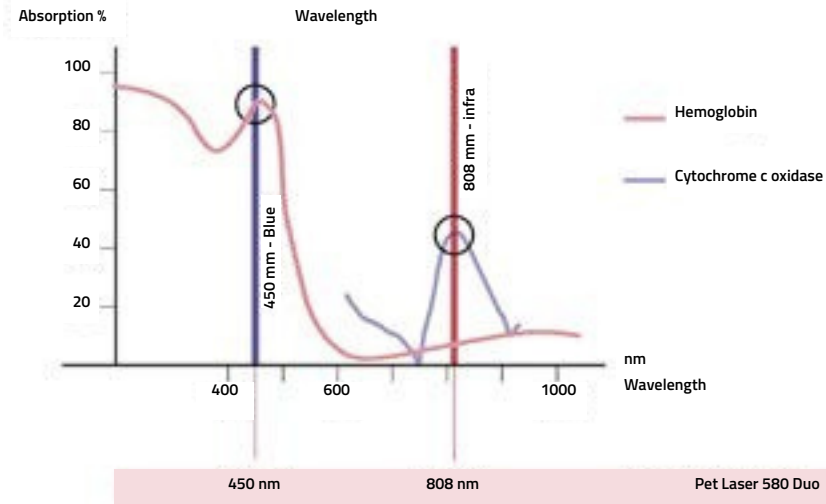
How soft laser therapy works

In every organism, there are a large number of different light-sensitive particles (e.g. Rhodopsin, Melanophore, Cytochrome-c-oxidase, Porphrin...etc.), which are the building blocks of important molecules, enzymes, and hormones.

Research showed already in 1947 that the mitochondria of cells are also sensitive to light. A laser of the appropriate wavelength (color) can stimulate the function of the enzyme responsible for the oxygen supply of mitochondria (cytochrome c oxidase), which optimizes the production of cellular energy (ATP) and its important vital functions.

Hemoglobin, which transports oxygen and carbon dioxide, also contains light-sensitive molecules, the laser treatment of which helps to optimize the functioning of the body.

The figure below shows the light absorption ability of hemoglobin and cytochrome c oxidase at the two different laser wavelengths working in the PET laser. Higher absorption results in more efficient excitation and a better biological response, i.e. healing efficiency.



What are the physiological effects of soft laser light?

Soft laser treatment has three known healing effects on the body:

- Biostimulation effect – Stimulates the body's self-healing ability!
- Anti-inflammatory
- Pain relief

The JK9 Pet Laser 580 Duo emits two types of laser light:

- Blue (450 nm) laser – 80mW
- Infra (808 nm) laser – 500mW

The red light of the infra (808nm) lasers is barely perceptible to the eye, predominantly the blue laser light is visible when the DUO device is turned on.

Safe healing in your home

Thanks to the patented safe laser technology, the general, extremely dangerous effect of soft laser devices on the eyes has been excluded. The JK9 Pet Laser 580 DUO achieves its complex healing effect on the surface of the skin and in the deeper layers of the body by combining blue light and infrared light, which is less visible to the naked eye.

No harmful side effects

The treatment cannot be overdosed, because the laser basically helps to initiate self-healing processes. Pet Laser is also harmless to the human body, as devices equipped with safe laser technology are widely used in human medicine. It perfectly complements medical interventions, helps wound healing, reduces inflammation, supports bone and cartilage formation. In the case of the JK9 Pet Laser, you do not have to worry about burns that are often experienced when using lasers, so you do not have to constantly move the laser on the skin surface during treatment.

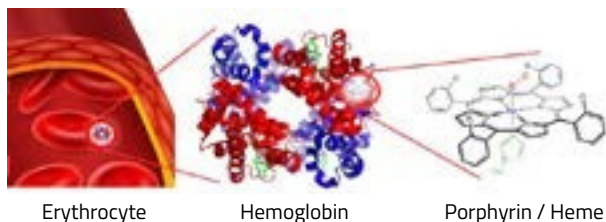
What kind of animals can we treat with the JK9 Pet Laser?

All pets, birds, reptiles, and mammals can be treated, which can be made to remain still and motionless for a few minutes.

The laser should be used in contact with the skin, pressing directly on it, in order to ensure a deep tissue effect and to comply with general laser safety regulations.

Which laser wavelength can be used for which disease?

Blue (450nm) laser light acts on the skin surface, therefore it plays a significant role in the healing of surface lesions. In addition, when illuminated into the nostril, it penetrates the thin nasal mucosa and has a stimulating effect on hemoglobin, which plays an important role in the body's oxygen and nutrition supply. In the case of dogs and cats, the same effect can be achieved by treating the jugular groove (neck vein) area.



Infrared (808nm) laser light is absorbed in deeper layers (its biological effect is effective even at a depth of 8-10 cm), so it can be used excellently, **e.g. in the therapy of musculoskeletal diseases**, where the pain relief and anti-inflammatory effects are important and accelerate the healing of muscles, tendons, and joints.

	450 nm blue	808 nm infrared
Effective treatment depth (Absolute penetration depth)	~ 0,5 cm	~ 8 cm

In case of higher dose it is also suitable for the regeneration of articular cartilage surfaces and cartilages.

Experience shows that infra laser is more effective in pain relief.

The JK9 Pet Laser 580 Duo device, with appropriate accessories, is also suitable for the treatment of diseases that can be healed by illuminating the nasal mucosa. (e.g. respiratory tract inflammations...)

In what cases does the JK9 Pet Laser help, used independently or as a supplement to medication or surgical therapy:

- surface disinfection of skin and wounds – blue laser light
- improvement of blood oxygen level – blue light
- general pain relief – blue and infrared light
- strain, sprain (distortio) – infrared light
- muscle, ligament or tendon rupture (ruptura) – infrared light
- bone fracture (fractura) – blue and infrared light
- bruise, haematoma – blue and infrared light
- joint wear, cartilage wear (arthrosis) – infrared light
- rheumatic pain (rheumatoid arthritis) – infrared light
- chronic joint inflammation (arthritis) – infrared light

- reduction of bleeding in fresh wounds – blue light
- pain relief in fresh epithelial injuries – blue and infrared light post-
- operative wounds, ulcers – blue and infrared light
- hair losses, post-surgery hair growth and regeneration – blue and infrared light
- oral and nasal mucosal injuries – blue and infrared light
- inflammatory lesions of abdominal organs - infrared light
- blood circulation problems – infrared light
- nerve injuries – blue and infrared light
- hearing impairment – blue and infrared light
- general endurance enhancement – infrared light
- regeneration of overused muscles – infrared light

How does soft laser work in veterinary medicine?

The laser light we use stimulates the oxygen and carbon dioxide supply of our cells and the energy production of the cells.

The biostimulation effect of soft laser is now indisputable in both human and veterinary medicine. Cells and tissues can regenerate faster when illuminated with soft laser light, and the body's immune responses are generally strengthened.

We tamed Einstein's laser

The foundations of laser science were laid by Albert Einstein, and the first working device was created from a high-power lamp by Theodore Maiman in 1960.

Professor Endre Mester, during his research of low-power (soft) lasers, later determined that soft laser has a "BIOSTIMULATION" (stimulating) effect on the living organism.

After several years of research and development, in 2012, laser physicist Károly Rózsa created a special soft laser with safe laser technology that excluded the extremely harmful effects on the eyes, thus enabling the birth of the JK9 Pet Laser, which can be safely used in our homes. This means that instead of polarized light lamps (e.g. Bioptron), a much more effective tool has been put into the hands of people wishing to be healed.

JK9 Pet Laser 580 Duo Overview

Based on the device's intended use, it falls into the veterinary category.

It is made by **special "Safe Laser" technology**, which means that the laser's parallel light beam, which is extremely dangerous for the eyes, can be excluded with the help of a special optical system. Therefore, accidental looking into the laser does not have a harmful effect on the eyes of animals. The use of the Pet laser is convenient for both the animals and the operating staff, as protective glasses are no longer required. However, the duo laser is not suitable for treating the eyes.

Thanks to this "Safe Laser" technology, this special soft laser is a device that **can be used safely not only in hospitals and clinics, but also at home, so the intended operator of the device can be a lay user in addition to professionals!**

Laser risk classification according to MSZ EN60825-1:2014 "Radiation safety regulations for laser products".

JK9 Pet Laser 580 Duo — Class 3R laser device

Pet Laser devices can be used effectively independently or as an supplementary therapy. The application of laser light therapy is painless, with its regular use, **the healing time of diseases is shortened and there are no known harmful side effects!** It can be combined with any other medication and device therapy.

Optional accessories: Fiber optics, nose treatment, for stabilizing: adapter rubber ring, which are recommended for use in the nose and body openings with the help of a laser therapy specialist.



Diseases and conditions that can be treated with the Pet Laser

(Indication circles – Detailed treatment protocol: www.safelaser.hu)

Musculoskeletal diseases (supplementary therapy)

Injuries:

- Strain-sprain (distortio), muscle, ligament or tendon rupture (ruptura), bone fracture (fractura)

Conditions caused by overexertion:

- Tendon inflammation (tendinitis), muscle inflammation (myositis)
- Periosteum inflammation at the attachment or origin of muscles

Degenerative changes:

- Joint wear, cartilage wear (arthrosis)
- Joint inflammation (arthritis)
- Pain relief, inflammation reduction in spinal diseases (e.g. lumbago)

- Muscle diseases: e.g. muscle pain, joint movement restriction (contractura)
- Rheumatic pain (rheumatoid arthritis)

Musculoskeletal diseases can cause problems and pain in different parts of the body or in several joints.

Soft laser therapy shortens the healing time of **traumatic injuries!**

After surgeries, use the laser 1-2 times a day for faster healing.

Dermatological diseases

- In the case of epithelial injuries, abrasions, and post-operative wounds, it promotes the regeneration of normal tissues, as well as the healing of difficult-to-heal wounds and ulcers.

Dental and oral diseases

Skin and surface mucosal diseases (e.g. mouth sores, ulcers, aphta) and gum atrophy can be effectively treated with the optional fiber optics, with the help of a laser therapy specialist.

Treatment procedure with the JK9 Pet Laser 580 Duo device

The laser should be placed on the skin, in contact with the painful or damaged area, and illuminated for the specified time, then it can be moved on to the next area.

Several points can be treated one after the other, depending on the size of the painful or damaged area.

Usually, the "pressure-sensitive" points should be treated.

For maximum safety, only turn on the laser after having placed it on the skin surface to avoid accidental looking into the laser light! At the end of the treatment, before removing the device from the skin surface, turn it off!

If, for example, the laser cannot be placed on the skin surface due to an open wound, it should be held as close as possible (max. 0.5 cm), but in this case, the treatment time should be extended by 1 minute per point, so that the appropriate amount of energy required for healing can enter the body!



Wound

Burst suture

5th week

7th week

Duration of treatments in each area

Different diseases and illnesses require different amounts of energy (Joules) for effective healing.

Higher energy intake can be achieved by irradiating for a longer period of time.

Dose (Joule/cm ²)	SL580 Duo
4-5 Joule energy – per treatment point Minor or close-to-surface musculoskeletal injuries, strains, muscle spasms, improving micro-circulation, acute and chronic inflammation, skin problems.	1 Minute
15 Joule energy – per treatment point Pain relief, more serious musculoskeletal diseases.	3 Minutes
25 Joule energy – per treatment point Treatment of musculoskeletal injuries in deeper layers, cartilage regeneration, ligament, muscle and tendon ruptures, bone fractures.	5 Minutes
With fiber optics 4-25 Joule energy (surface-deeper layers)	25 sec - 3 Minutes
With nose treatment accessory 4 Joule energy	3 Minutes

Frequency of treatments

The frequency of treatments depends on the actual duration of the disease. (How long ago did the problem occur?)

1. **Treatment of acute** (recently occurring) **diseases and post-surgery cases:**

The treatment should be applied **daily** for 1-2 weeks, then 3 times a week until the symptoms disappear.

Improvement can be detected even during the first treatment or within 1 day!

2. **Treatment of chronic** (long-term) **diseases** (occurring more than 6-8 weeks ago):

Long-term diseases **should be treated less frequently**. Use the laser **3 times a week** until symptoms disappear or are significantly reduced.

In case of chronic diseases, recovery naturally takes a longer period of time (days, weeks, or maybe even months).

After the first treatments, you may feel a slight **tingling** sensation, and a few hours later, in some cases, **in chronic diseases the pain may increase (treatment reaction), but this is a temporary phenomenon**. The intensity of the pain decreases continuously with the number of treatments and disappears after 3-4 treatments, and then improvement begins. The treatment reaction is a normal accompanying phenomenon, a sign that the patient is responding to the therapy.

If we experience that, e.g., **the painful joint neither improves nor “gets worse”**, then we have probably treated with **too low dose** (irradiation for a too short period of time).

Individual sensitivity is different for everyone. Since the doses of the treatments are added up slowly so the treatment reaction (e.g. pain increase) may appear later (after a few weeks) and only then will subjective improvement begin.

If, as a result of treatments, the **pain maybe increases or becomes more prolonged** this is a sign that we have treated with **too high dose**. Overtreatment does not cause permanent damage. In such cases, we skip some treatments and continue the therapy with a lower dose (fewer sessions or shorter treatment duration).

One of the reasons for the possibly occurring accompanying pain is the sudden start of micro-circulation (blood flow in the smallest blood vessels) in the stagnant areas. The decomposition products accumulated in the stagnant areas (which were not transported away) suddenly enter the circulation, therefore seldom nausea, fatigue, and malaise can occur (after having treated large areas with high doses).

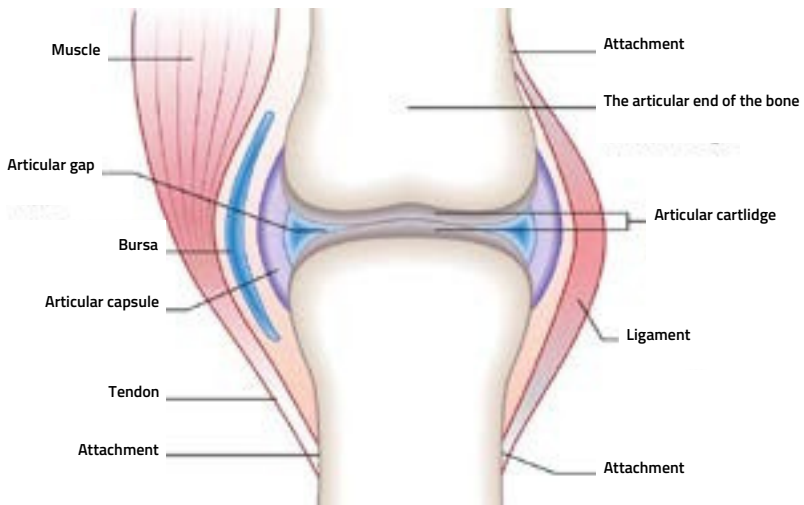
More frequent or longer treatments do not necessarily speed up healing, because there is a biological limit beyond which cells cannot be further stimulated by radiation!

Determination of treatment sites

In the case of muscles: We palpate the muscles thoroughly and treat the „pressure-sensitive“ points.

In the case of joints: We usually treat in the line of the articular gap. The joints can be „opened“ by bending the limbs, so that the light can be imparted into the interior of the joint. We also palpate the muscles that move the joint and treat their sensitive points.

In the case of tendons: We treat at the tendon attachment, at the muscle-tendon transition and at the „pressure-sensitive“ points.



Even if the treatment points are not found exactly, the therapy can still be effective because the light from the JK9 Pet Laser spreads over a large surface area.

When can you expect improvement after laser treatment?

In certain cases, laser light works very quickly. In the following cases, improvement usually occurs **within minutes/hours:** pain relief, reduction of acute inflammation, improvement of micro-circulation, muscle tension, relief of muscle spasms.

In cases of other problems, the effect can be felt **within days/weeks.**

Contraindications

- The JK9 Pet Laser 580 DUO is intended for veterinary use
- Do not illuminate: the eye area, the area of tumors,
 - the thyroid gland (in case of hyperfunction) and the breast area,
 - infected, fungal skin areas!
- Direct irradiation of pigmented moles and warts is absolutely not recommended.
- **Never treat in long term without an accurate medical diagnosis,** because the Pet Laser can reduce the pain, but it cannot always eliminate the cause of the problem and may temporarily cover up more serious diseases!
- If you are unsure about any of the contraindications, ask veterinarian's opinion!

Laser safety regulations

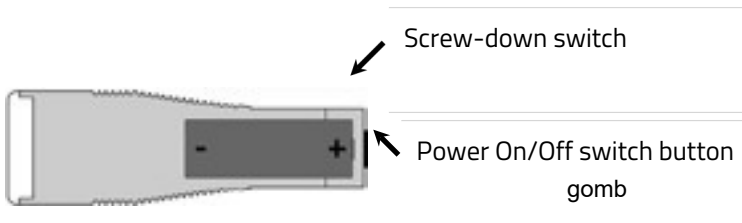
The diffused laser light of the Pet Laser devices, unlike other laser equipment, is less dangerous to the eyes. However, the user of the device is obliged to comply with the laser safety measures in order to avoid any possible dangers arising from its operation!

- **"Class 3R"** laser equipment according to MSZ EN60825-1:2014 "Radiation safety regulations for laser products". The classification was based on the specified requirements of the standard for scattered radiation.
- Measurements were carried out by: Wigner Physics Research Center – Optical Laboratory
- Do not look into the laser beam, nor direct it into the eyes of others! It is prohibited to put the laser at the eyeball or shine it into the eyes of any treated animal, because, regardless of the use of the safe laser technology, similarly to the sunlight, it can cause eye damage.

- **Switch on the laser only after having placed it on the skin surface to avoid accidental looking into the laser light! At the end of the treatment, before removing the device from the skin surface, switch it off!**
- The Pet Laser device must be kept out of reach of children!
- **Do not use the device if it is damaged or malfunctioning! It is FORBIDDEN to disassemble the optics, and it is FORBIDDEN to turn the device on if the optics are damaged**

Installation and use of devices

- Read the user guide carefully before first use!
- Follow and comply with the "Laser safety regulations"! (User Guide page 9)
- After unpacking, it is advisable to clean the device for hygienic reasons. According to the MSZ EN ISO 10993-1:2023 standard, the part of the device that comes into contact with tissues, cells, and body fluids meets the conditions of biocompatibility.
- Inserting the battery:



- Use the device only with the supplied 18650 type, 3.6V DC, rechargeable batteries provided with electronic protection! A type different from the one provided by the manufacturer may cause the malfunction of the laser and results in losing the warranty!
- Always start treatments with a charged battery! Replace the battery after 500 charging cycles or if the operating time is significantly reduced.

- Always lock up the device after use to prevent it from falling into the hands of unauthorized persons/children!
- The device can be used between +10°C and max. +35°C temperature.
- If the device is damaged or malfunctioning, do not use it any longer!
- In order to avoid possible dangers, it must only be serviced by the manufacturer.

Technical data of the device

Parameter	SL580 Duo
Maximum output	580 mW
Output density	180mW/cm ²
Wavelength	450nm and 808nm laser
Power supply	3.6V DC, 1x 18650 battery
Life span	10 000 hours
Operating temperature	+10 °C to +35 °C
Country of origin	Hungary

Maintenance and repair

- The device does not require any special maintenance.
- Protect the optical surface from staining, if necessary, clean it with a non-scratch method (with water, alcohol-based detergent).
- Use the device only with the specified type of rechargeable batteries!
The user may replace and charge the batteries himself. (Page 10)
- The device must be protected from moisture, radiant heat and from being dropped!

- Operating temperature: +10°C, max. +35°C.
- The device may only be repaired by the manufacturer! Do not perform maintenance while the device is in use.
- Pet Laser devices are manufactured in Hungary.
- At the end of the device's life span, it can be returned to the manufacturer for disposal.

Warehousing, storage

When warehousing, storing the device at the user's premises, the safety regulations must be observed. Storage temperature: -10°C, max. +45°C

It should be stored in a protected place, out of reach of children and unauthorized persons.

If you do not use the device for a longer period of time, remove the battery from the laser.

Warranty

The Manufacturer/Distributor (Obligated Party) undertakes warranty for the device for a period of 3 years following the date of purchase. The warranty does not cover damages which are resulting from failure to comply with the instructions for use in the User Guide or from natural disasters.

IMPORTANT INFORMATION:

- 1/. The Consumer can validate his warranty claim with the Warranty Card, so keep it.
- 2/. Require the distributor to indicate the exact date of purchase on the Warranty Card.
- 3/. We cannot replace a lost Warranty Card.
- 4/. Warranty repairs can only be carried out by designated service centers based on a valid Warranty Card.
- 5/. Any repair, deletion or overwriting on the Warranty Card, or the entry of false data, shall result in the invalidation of the Warranty Card.
- 6/. The improper filling in of the Warranty Card or the failure to hand it over to the Consumer shall not affect the validity of the warranty commitment.

The Consumer's rights based on the warranty:

The Consumer is entitled to the rights specified in Sections 3, 6, 7 of Act XLVII of 2008 on the Civil Code and in Government Decree 151/2003 (IX.22.):

(1) In the event of defective performance, the Consumer

a) may primarily – at his choice – demand repair or replacement, unless the fulfillment of the chosen warranty claim is impossible or if this would result in disproportionate additional costs for the Obligated Party compared to the fulfillment of the other warranty claim, taking into consideration the value of the delivered item in a faultless condition, the seriousness of the breach of contract and the inconvenience caused to the Consumer by the fulfillment of the warranty right;

b) if he has no right to repair or replacement, or if the Obligated Party has not undertaken to repair or replace or is unable to fulfill his obligation under the conditions set out in paragraph (2), he may – at his choice – demand an appropriate price reduction or withdraw from the contract.

There is no right to withdraw from the contract due to a minor defect.

If the Consumer asserts his replacement request within three working days following the purchase (installation) due to a malfunction of the consumer product, the distributor may not invoke disproportionate additional costs, but is obliged to replace the consumer product, provided that the malfunction prevents its intended use.

(2) The repair or replacement – taking into consideration the characteristics of the goods and its intended use by the Consumer – shall be carried out within a reasonable time limit without causing significant inconvenience to the Consumer. The Obligated Party shall endeavour to carry out the repair or replacement within a maximum of fifteen days. During the repair, only new parts may be installed into the consumer product.

(3) If the Obligated Party does not undertake or does not carry out the repair of the device within an appropriate time limit, the entitled party (Consumer) may repair the defect himself or have it repaired by someone else at the expense of the Obligated Party. The Consumer may also assert his claim for repair directly with the Manufacturer/ Distributor or with the repair service indicated on the Warranty Card. The Consumer, after discovering the defect, is obliged to notify the Obligated Party of his objection within the shortest possible time allowed by the circumstances. A complaint notified within two months of discovering the defect shall be deemed to have been notified in due time. The Consumer shall be liable for any damage resulting from delayed notification. The warranty period shall be extended by the part of the repair period during which the Consumer was unable to use the product as intended.

The warranty does not apply to the following cases:

- failure due to improper use,
- in case of staining, mechanical damage or vandalism due to inadequate protection of the device, or if the device is taken apart or disassembled during the warranty period

WARRANTY CARD

Distributor's Name: JK9 IP Management Private Shareholding Company

Phone: +36203514865

Distributor's Address: 2310 Szigetszentmiklós, Fás utca 11., Hungary

Date of Purchase: Signature of Seller:

Warranty Until: Production Number: SN.....

Annex 1

Regarding the electromagnetic compatibility (EMC) of the JK9 Pet Laser 580 Duo device manufactured by Laser Light Medical Technology Innovation Ltd. the compliance has been determined according to the following tables:

According to EN 60601-1-2:2015 5.2.2.1. Table 1:

MANUFACTURER'S DECLARATION - ELECTROMAGNETIC EMISSIONS		
The JK9 Pet Laser 580Duo is intended for use in the electromagnetic environment specified below. The customer or the user should assure that the device is used in such an environment.		
Emission test	Performance/Output	Electromagnetic environment
RF emissions CISPR 11	Group 1	The JK9 Pet Laser 580 Duo uses RF (radio frequency) energy only for its internal functions. Therefore, its RF emissions are very low and are not likely to cause any interference in nearby equipment.

RF emissions CISPR 11	Class B, EMC-110119/1, Compliant; 30-1000 MHz	The JK9 Pet Laser 580 Duo device is suitable for use in any facility, including the home.
Harmonic emission IEC 61000-3-2	Class B, EMC-110119/1 Compliant; 0.15 - 30 MHz	
Voltage fluctuations, flicker emission IEC 61000-3-3	Compliant	

According to EN 60601-1-2:2015 5.2.2.1. Table 2:

MANUFACTURER'S DECLARATION - ELECTROMAGNETIC IMMUNITY			
The JK9 Pet Laser 580 Duo is intended for use in the electromagnetic environment specified below. The customer or the user should assure that the device is used in such an environment.			
Immunity Test	IEC 60601 test level	Compliance level	Electromagnetic environment
Electrostatic discharge (ESD) immunity IEC 61000-4-2	± 6 kV contact discharge ± 8 kV air discharge	Compliant Qualification: functioning as intended within specified limits	The floor should be made of wood, concrete or ceramic tiles. In the case of synthetic flooring, the relative humidity should be at least 30%.
Immunity to EFT (Electrical fast transient/burst) signals. IEC 61000-4-4	± 2 kV between L, N, PE – ground	Cannot be applied. Colony operation.	-
Surge immunity IEC 61000-4-5	± 1 kV between L – N ± 2 kV between L, N – ground	Cannot be applied. Colony operation.	-
Voltage dips (DIP), voltage interruptions (Interruption) immunity IEC 60601-4-11	<5 % UT, >95% DIP; 0.5 per. 40 % UT, 60% DIP; 5 per. 70 % UT, 30% DIP; 25 per. <5 % UT, >95% DIP 5 s	Cannot be applied. Colony operation.	-
Mains voltage (50/60Hz) magnetic field	3 A/m	Compliant Qualification: functioning as intended within specified limits	The magnetic field of the mains voltage should have the features of a typical location in a conventional or hospital environment.
Note: UT is the mains voltage, before applying the test level			

According to EN 61601-1-2:2007 5.2.2.1. Table 4:


MANUFACTURER'S DECLARATION - ELECTROMAGNETIC IMMUNITY			
The JK9 Pet Laser 580Duo is intended for use in the electromagnetic environment specified below. The customer or the user should assure that the device is used in such an environment.			
Immunity Test	IEC 60601 test level	Compliance level	Electromagnetic environment
Immunity to conducted RF signals on network cables	3 Vrms 150 KHz–80 MHz	Compliant Qualification: functioning as intended within specified limits [V1] V	Immunity to conducted RF signals on network cables 3 Vrms 150 KHz–80 MHz Compliant Qualification: functioning as intended within specified limits [V1]V Portableandmobile RF communications equipment should not be used closer to the Pet Laser 580 Duo device within the recommended separation distance which can be calculated from the formula seen below. $d=[3.5/V1]\sqrt{P}$ $d=[3.5/E1]\sqrt{P}$ Immunity to radiated RF signals 3 V/m 80 MHz–2.5 GHz Compliant Qualification: functioning as intended within specified limits
Immunity to radiated RF signals	3 V/m 80 MHz–2,5 GHz	Compliant Qualification: functioning as intended within specified limits [E1] V/m	[E1] V/m 80 MHz–800 MHz $d=[7/E1]\sqrt{P}$ 800 MHz–2.5 GHz where P is the maximum power of the transmitter [W], according to its technical manual and d is the recommended separation distance [m]. (e.g. in case of a mobile phone: $d=[7/2]1.41=4.935$ m) In the surroundings of the device interference may occur for such equipment marked as below.


According to EN 60601-1-2:2015 5.2.2.1. Table 6:

RECOMMENDED SEPARATION DISTANCE BETWEEN PORTABLE AND MOBILE COMMUNICATIONS EQUIPMENT AND THE PET LASER 580 DUO DEVICE			
The Pet Laser 580 Duo device should be operated in such an electromagnetic environment in which radiated RF disturbances are controlled. The customer or user of the Pet Laser 580 Duo can prevent electromagnetic interference by maintaining the minimum separation distance.			
The specified maximum transmit power W	Separation distance according to transmitter's frequency (m)		
	150 KHz-80 MHz $d=[3.5/V1]\sqrt{P}$	80 MHz-800 MHz $d=[3.5/E1]\sqrt{P}$	800 MHz-2.5 GHz $d=[7/E1]\sqrt{P}$
0,01	0,1167	0,1167	0,2333
0,1	0,3689	0,3689	0,7379
1	1,1667	1,1667	2,3333
10	3,6894	3,6894	7,3788
100	11,6667	11,6667	23,3333

Based on the above, it can be concluded that the device in question meets the EMC requirements for household and medical devices.


Explanation of labels on the device


 Marking of CE compliance

 Manufacturer's symbol


 Date

 Production number

 Electronic waste, DO NOT throw it into the trash!

 Read the User Guide

IP21 Protected against solid foreign objects Ø 12.5 mm and vertically falling water drops

 Laser-in-Use warning sign

Manufacturer's Declaration of Compliance

Name: Veterinary Therapeutic Laser Equipment

Julius K9 Pet Laser

serial number: from 0010

Distributor: JK9 IP Management Private Shareholding Company

Seat of Company: 2310 Szigetszentmiklós, Fás utca 11., Hungary, Tax Number: 32829772-2-13, Company Registration No.: 13-10-042759

Contact: info@julius-k9.com

Phone: +36 20 252 1816

Manufacturer: Laser Light Medical Technology Innovation Ltd.

Seat of Company: 1138 Budapest, Hajóépítő sétány 4.B. IX.201., Hungary

The product complies with the essential requirements of the

EMC 2014/30/EU Directive

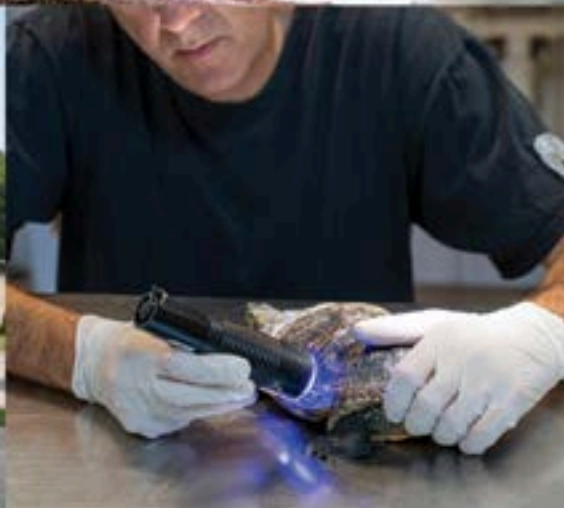
EN6100-6-3:2007+A1:2011, EN6100-6-1:2007,

and also with the requirements of the RoHS 2 2011/65/EU Directive (8th June 2011.).

Budapest, 31st July 2025

Rózsa Tamás

Managing Director



JULIUS-K9®

JK9 PET LASER 580 DUO

SAFE HEALING
IN THE COMFORT
OF YOUR HOME.



julius-k9.com
JK9 IP Management Zrt.